



www.cambridgepavers.com



Canyon Ledge Collection

Stone...throughout the centuries, it has been an enduring symbol of strength, beauty and elegance in the world's landscape. From centuries-old castles and medieval cathedrals to today's modern homes, businesses and monuments, stone continues to be a popular choice for almost any building project.

Cambridge Pavers recognizes the lasting beauty and rich textures of the natural stone on our native landscapes...and we've even improved on it. Molded from real stones found in riverbeds, mountains and streams of our lands, Cambridge Pavers veneer has all the warmth and elegance of the real stone from which it was cast, with all of its natural distinct qualities.



Canyon Ledge | Chestnut

Our Canyon Ledge Collection was created from handpicked stones taken from the time-worn ledges and valleys of Wisconsin. The Canyon Ledge stones vary in thickness from 1" to 2 1/2", lengths from 8" to 22" and heights from 1" to 8". The weathered textures offer a rustic and warm feel to any facade, gable, entryway or fireplace.



Canyon Ledge | Autumn Blend

Chestnut

A warm mixture of earth tone tans and browns with a hint of charcoal make chestnut a very natural looking stone. Chestnut is neutral enough to accent almost any color home, and has a deep and textured look to add a homey feel. Chestnut tones are earthy and understated yet add sophistication to any look.



Canyon Ledge | Chestnut



Santa Fe

Consisting of Indian Brown, Sandy Buff and Charcoal, Santa Fe is the only stone color we blend by hand to create a Southwestern feel. Santa Fe adds warmth and character to neutral tones.



Canyon Ledge | Santa Fe



Midnight Slate

Combinations of lighter and darker grays and charcoal with hints of autumn leaves highlighting this palette give midnight slate a three-dimensional feel. The crisp and classic shades of gray found in Midnight Slate exemplify the elegance only stone can add to a home.



Canyon Ledge | Midnight Slate



Autumn Blend

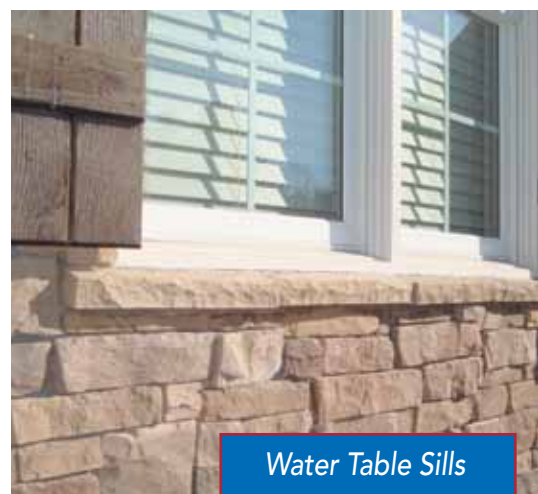
A natural blending of forest green, canyon red, autumn leaves and sandy buff brings out the season of autumn blend. The combinations of these colors allow a designer to complement and decorate for that professional look. Autumn blend enhances any environment or season.



Canyon Ledge | Autumn Blend



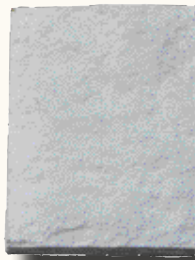
Accessories	LENGTH/HEIGHT	WIDTH	THICKNESS
Soldiers	small 5"	4"	1 1/2"
	large 8"	6"	1 1/2"
Key Stones	small 10"	8" Top 6" Bottom	1 1/2"
	large 13 1/2"	10" Top 6" Bottom	1 1/2"
Water Table Sills	small 18"	2 1/2"	2"
Fixture	12"	8"	1 1/2" (4" dia. hole centered)
Receptacle	8"	5"	1 1/2" (single receptacle box hole)
Double Receptacle	8"	8"	1 1/2" (double receptacle box hole)
Shutter Blocks	13"	2 1/2"	2 1/2"



Accessories



Small Soldier



Large Soldier



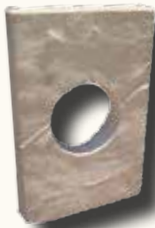
Watertable Sill



Shutter Block



Large & Small Keystone



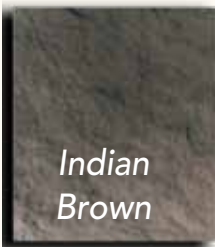
Fixture Stone



Receptacle Stone



Double Receptacle Stone



*Indian
Brown*



*Autumn
Leaves*



*Sandy
Buff*



*Morning
Mist*

**All accessories are available in 4 distinct colors. The following table indicates the recommended accent color for your finished stone color.*

**Except Shutter Block - Only available in Indian Brown and Sandy Buff.*

Suggested Accessory Color

Finished Stone Color

<i>Indian Brown</i>	<i>Santa Fe</i>
<i>Autumn Leaves</i>	<i>Chestnut</i>
<i>Sandy Buff</i>	<i>Autumn Blend</i>
<i>Morning Mist</i>	<i>Midnight Slate</i>

Technical Specifications ICC-ESR 3111

Testing of our stone is performed in accordance with ICC AC51 by an accredited testing engineering firm.

Specimens were tested for various properties in accordance with AC51 sections 4.2 through 4.7. Refer to test result table below.

ASTM C109-05 Compressive Strength Avg. 2374 psi	ASTM C190 Tensile Strength Avg. 188,003 psi	ASTM C348 Flexural Strength Avg. 4.77 MPa	ASTM C482 Shear Bond Strength Avg. 92.74 psi	AC51-2008 Moisture Absorption Avg. 9.5%	ASTM C67-03 Freeze - Thaw Avg. -0.74% weight loss
--	--	--	---	--	--

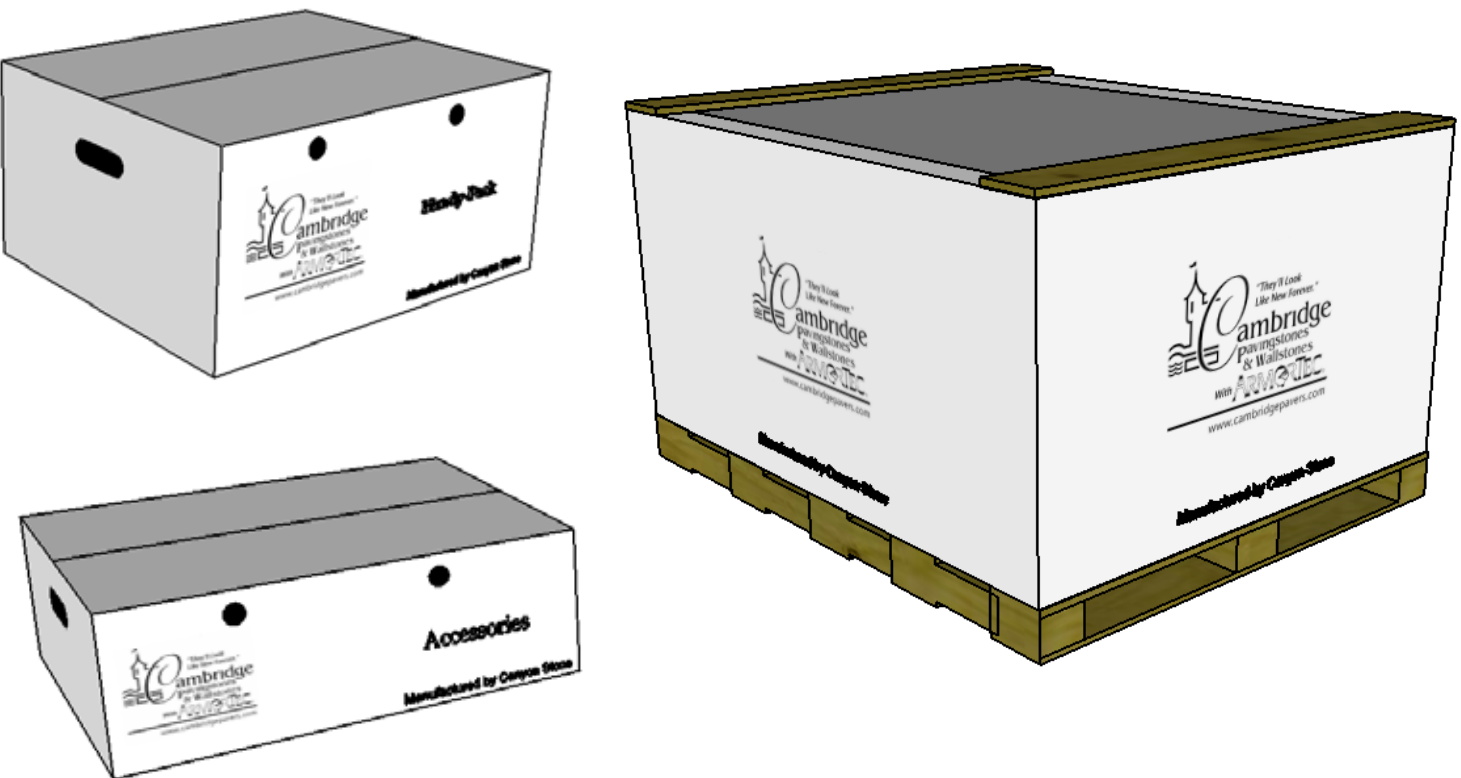
Canyon Stone products meet the requirements and conditions of acceptance for ICC ES AC51 “acceptance criteria for precast stone veneer”, approved February 2008, Effective March 1,2008.

50 Year Limited Warranty

Canyon Stone warrants its veneer products for 50 years against manufacturing defects when installed on buildings complying with local building codes and meeting manufacturers written instructions. This warranty excludes deterioration caused from chemicals, paints, wall movement, building settlement, and discoloration from oxidation and contaminates. Coverage is limited to the original purchaser, does not include labor, and is limited to the repair or replacement of the product.

Packaging

Our stones and accents are carefully stacked in framed wooden pallets yielding 120sf of flats. Pallets are then wrapped with a weather resistant cardboard. Kraft paper layers every other row to minimize scuffing of stones during transit. Smaller projects are packaged in Handy-Packs with 10sf of flats and 9 lf of corners.





Your Authorized Dealer



www.cambridgepavers.com

PO Box 157 | Lyndhurst, NJ 07071-0157 | 201.933.5000 | 201.933.5532 fax